



# MC-E 2 EU

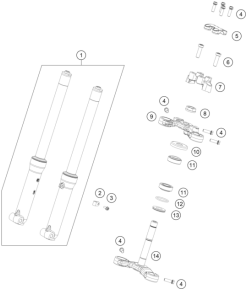
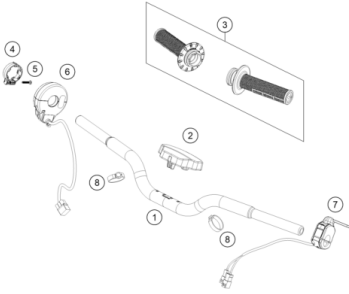
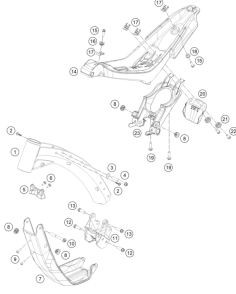
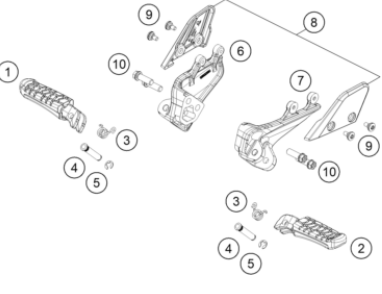
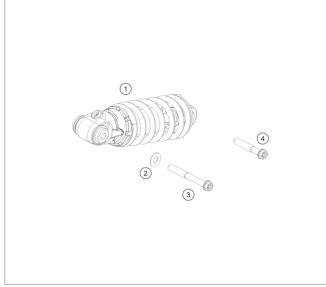
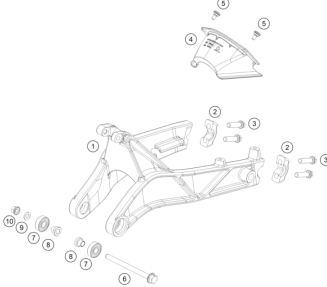
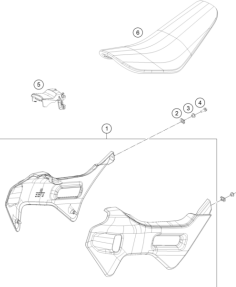
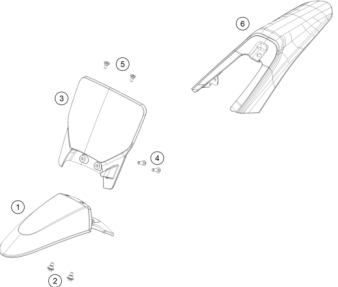
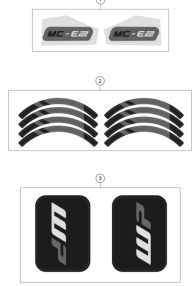
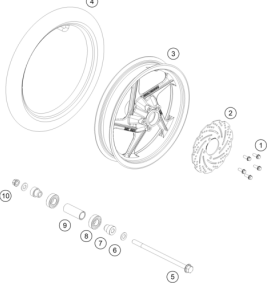
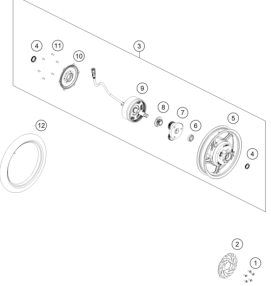
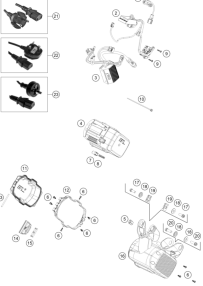
CHASSIS / ART.-NR.F0001X3 / **2024**  
SPAREPARTSCATALOG

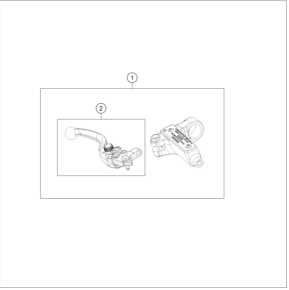
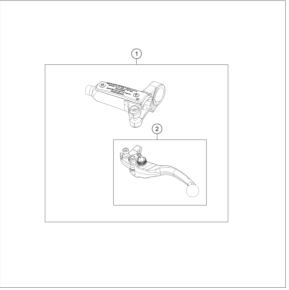
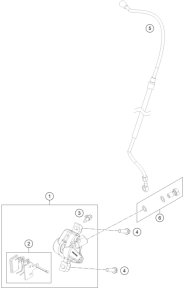
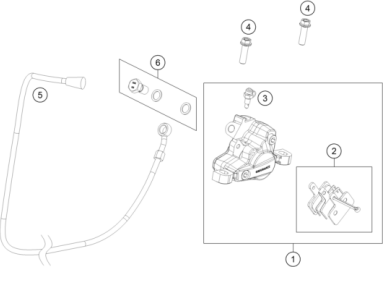
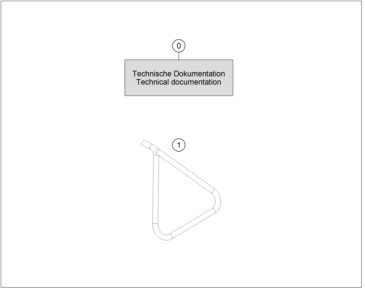
# ***GASGAS***

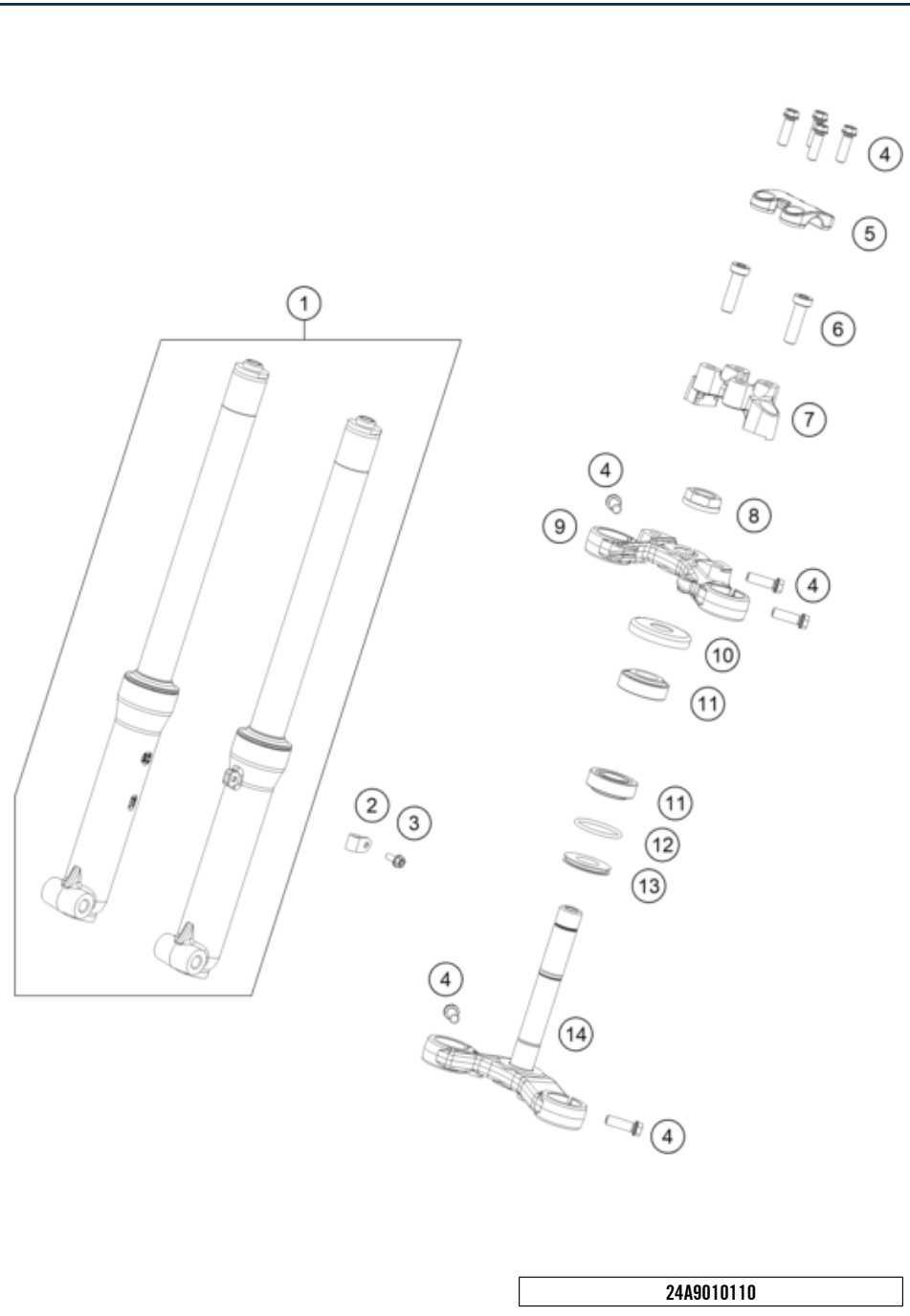


All information contained is without obligation. KTM Sportmotorcycle GmbH particularly reserves the right to modify any equipment, technical specifications, prices, colors, shapes, materials, services, service work, constructions, equipment and the like so as to adapt them to local conditions or to cancel any of the above items, all without previous announcement and without giving reasons. KTM may stop manufacturing certain models without previous notice. KTM shall not be held liable for any deviations of availability and/or ability to deliver, illustrations, descriptions, printing and/or other errors. The illustrated models partly contain extra equipment, which is not applied to standard models.

© by KTM Sportmotorcycle GmbH, Mattighofen AUSTRIA; All rights reserved; Reprint, also in extracts, with written allowance of KTM Sportmotorcycle GmbH, Mattighofen only.

<p><b>FRONT FORK, TRIPLE CLAMP</b></p>  <p><b>3</b></p>	<p><b>HANDLEBAR, CONTROLS</b></p>  <p><b>4</b></p>	<p><b>FRAME</b></p>  <p><b>5</b></p>	<p><b>FOOTPEGS</b></p>  <p><b>6</b></p>
<p><b>SHOCK ABSORBER</b></p>  <p><b>7</b></p>	<p><b>SWING ARM</b></p>  <p><b>8</b></p>	<p><b>TANK, SEAT</b></p>  <p><b>9</b></p>	<p><b>MASK, FENDERS</b></p>  <p><b>10</b></p>
<p><b>DECAL</b></p>  <p><b>11</b></p>	<p><b>FRONT WHEEL</b></p>  <p><b>12</b></p>	<p><b>REAR WHEEL</b></p>  <p><b>13</b></p>	<p><b>BATTERY</b></p>  <p><b>14</b></p>

<p><b>FRONT BRAKE CONTROL</b></p>  <p><b>15</b></p>	<p><b>REAR BRAKE CONTROL</b></p>  <p><b>16</b></p>	<p><b>FRONT BRAKE CALIPER</b></p>  <p><b>17</b></p>	<p><b>REAR BRAKE CALIPER</b></p>  <p><b>18</b></p>
<p><b>SEPERATE ENCLOSURE</b></p>  <p><b>19</b></p>			



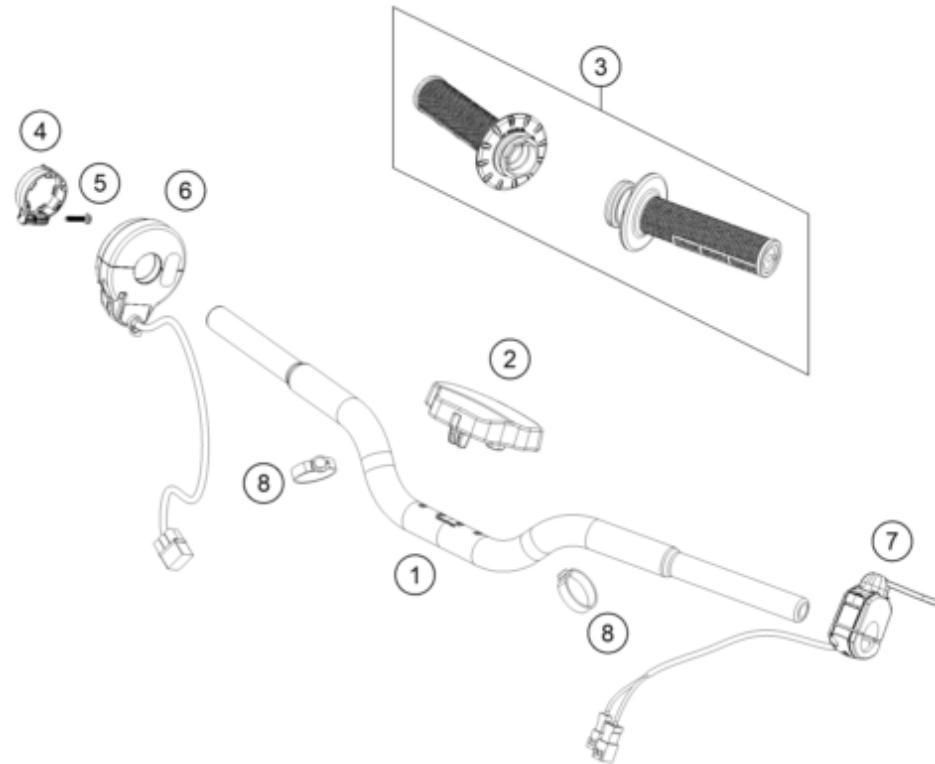
24A9010110

POS	PARTNUMBER		PIECE
1	A90101000044	Fork E2 cpl.	1
2	57013070100	PVC-CLAMP 7,9 MM HEYCO 3355	1
3	0025050126S	Hex collar screw M5x12 ISA30 SS	1
4	0025080256	HH collar screw M8x25	9
5	A90101038000	Handlebar clamp D=22	1
6	0032100356S	AH-COLLAR SCREW M10X35 ISA45	2
7	A90101039000	Handlebar mount D=22	1
8	59030029000	HH NUT M20X1,5 WS=27 RIGHT	1
9	A90101034015	Top triple clamp X=15mm	1
10	49001086000	COVERING CAP	1
11	49001081000	TAPERED ROLLER BEARING 32004X	2
12	0770360030	O-RING 36,00X3,00 NBR	1
13	46001086000	PROTECTION RING 20,1X39X5	1
14	A90101032015	Bottom triple clamp cmpl. x=15mm	1

68580

\* NEW PART

X ON DEMAND



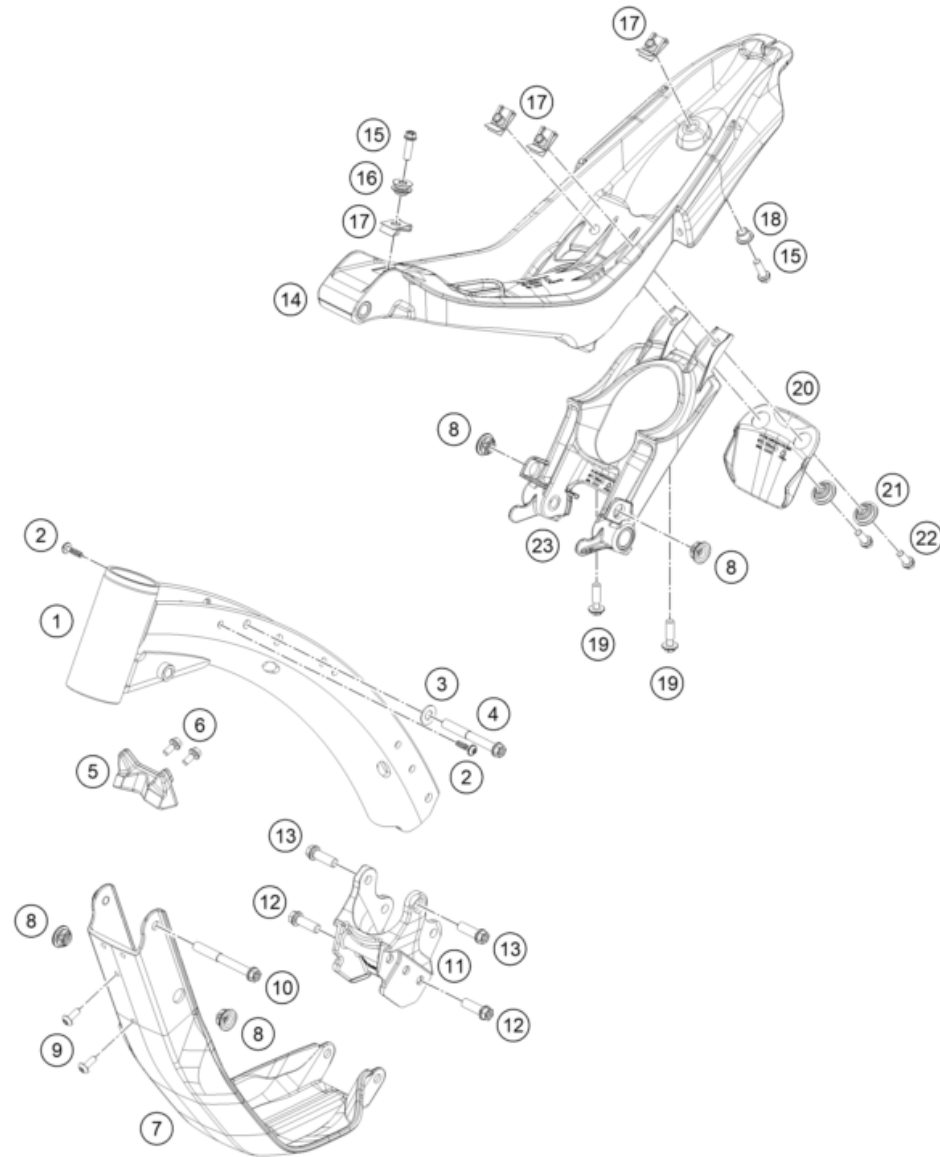
POS	PARTNUMBER		PIECE
1	A90102001000	Handlebar D=22 D=18	1
2	A90102002000	Handlebar pad	1
3	45402021000	Grip Set	1
4	45402015000	clamping ring	1
5	0081035183	Ejot delta PT screw 35X18	1
6	45411012000	Ride-by-wire without throttle tube	1
7	A90145090000	Charge level indicator	1
8	BFS450320067	Cabeltie	2

24A9010210

68581

\* NEW PART

X ON DEMAND



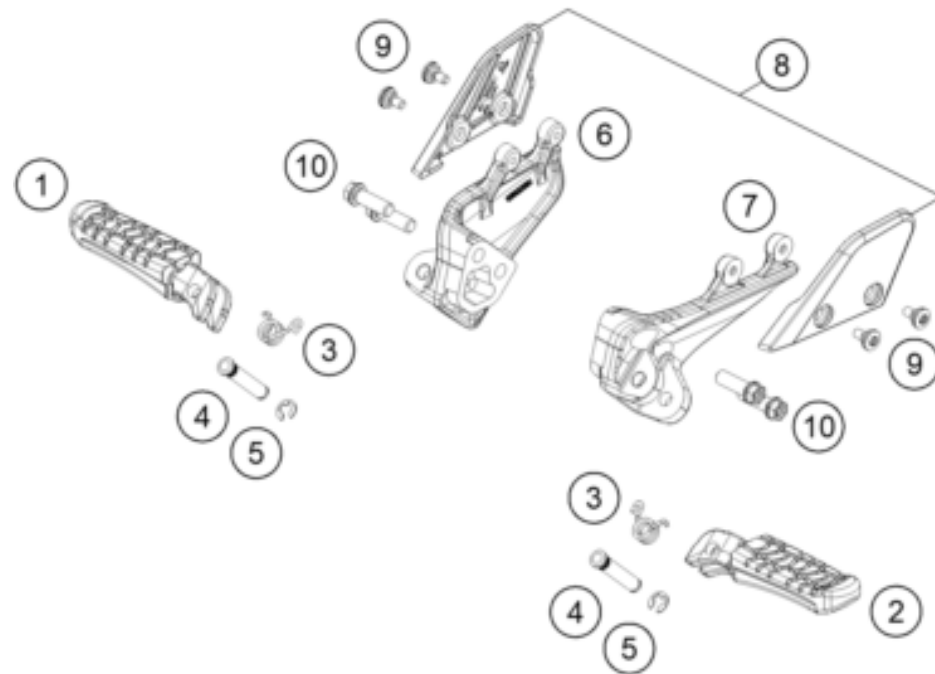
POS	PARTNUMBER		PIECE
1	A90103001000C1	Frame E2	1
2	0081050181	SCREW FOR PLASTIC K50X18 T20	2
3	77003013050	WASHER 8,5X18X1 INOX	1
4	0025080656	HH collar screw M8x65 TX40	1
5	A90101026000	Steering stop	1
6	0025050126	HH collar screw M5x12 TX30	2
7	A9010309101001	Frame protector front top	1
8	47106003160	quick release rubber grommet	4
9	58605083114	Roundhead screw, M5x14 TX25	2
10	0900000807000	Special screw M8x70-8.8	1
11	A90103037000	Footpeg bracket adapter	1
12	0025080256S	HH COLLAR SCREW M8X25 TX40	2
13	0025080256	HH collar screw M8x25	2
14	A90103002000	Subframe	1
15	0025060206	HH collar screw M6x20 TX30	2
16	0800000601001	Seat bushing	1
17	54603048100	clip nut M6	4
18	81208020000	SPACER BUSHING FRONT FENDER	1
19	0016070253	PLASTIC SCREW K7X25 PT1447	2
20	A90108075000	Shock absorber splash protection	1
21	77306001030	COLLAR BUSHING 4,5/12,6/23	2
22	0025060166	HH collar screw M6x16 TX30	2
23	A90103002064	Subframe support	1

24A9010310

68621

\* NEW PART

X ON DEMAND



POS	PARTNUMBER		PIECE
1	61003051000	FOOTREST FRONT R/S CPL. 05	1
2	61003050000	FOOTREST FRONT L/S CPL. 05	1
3	76003042000	RETURN SPRING FOOTREST	2
4	60003044100	footrest bolt, rear	2
5	0799060003	retaining washer DIN 6799 - 6	2
6	A90103039000	Footpeg bracket right	1
7	A90103038000	Footpeg bracket left	1
8	A90103060011	heelguard kit	1
9	69008021160	special screw M5x12	4
10	0025080256S	HH COLLAR SCREW M8X25 TX40	4

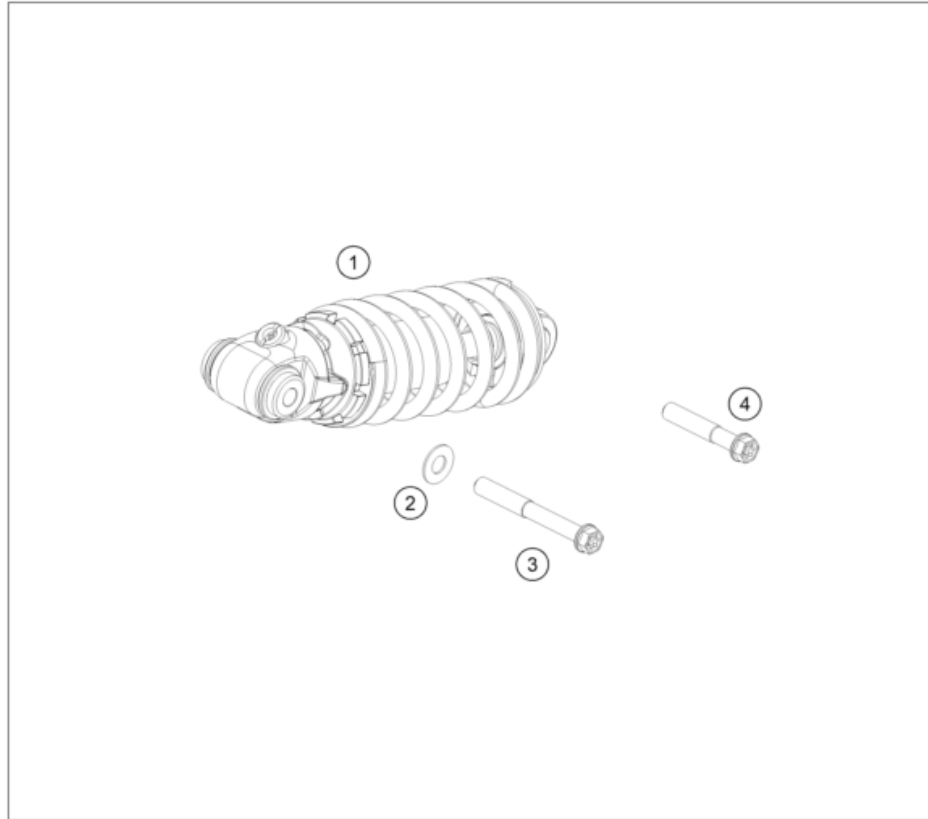
24A9010320

68610

\* NEW PART

X ON DEMAND





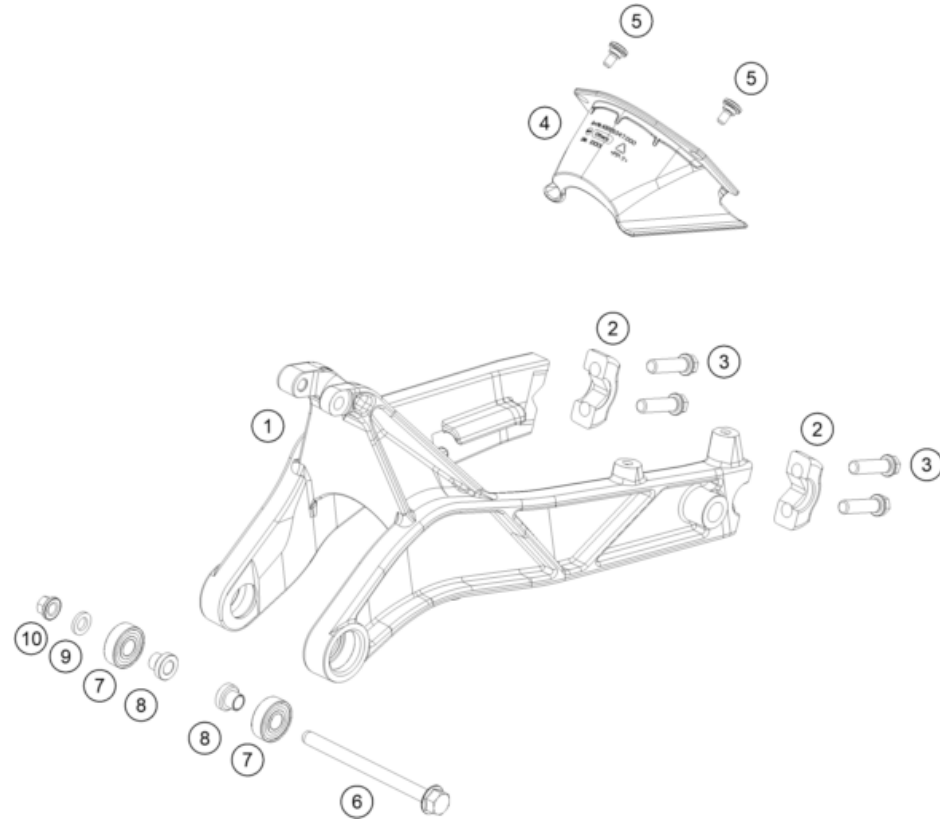
POS	PARTNUMBER		PIECE
1	A90104010044	Shock absorber E2 cpl.	1
2	77003013050	WASHER 8,5X18X1 INOX	1
3	0025080656	HH collar screw M8x65 TX40	1
4	0025080456S	HH COLLAR SCREW M8X45 ISA40	1

24A9010410

68617

\* NEW PART

X ON DEMAND



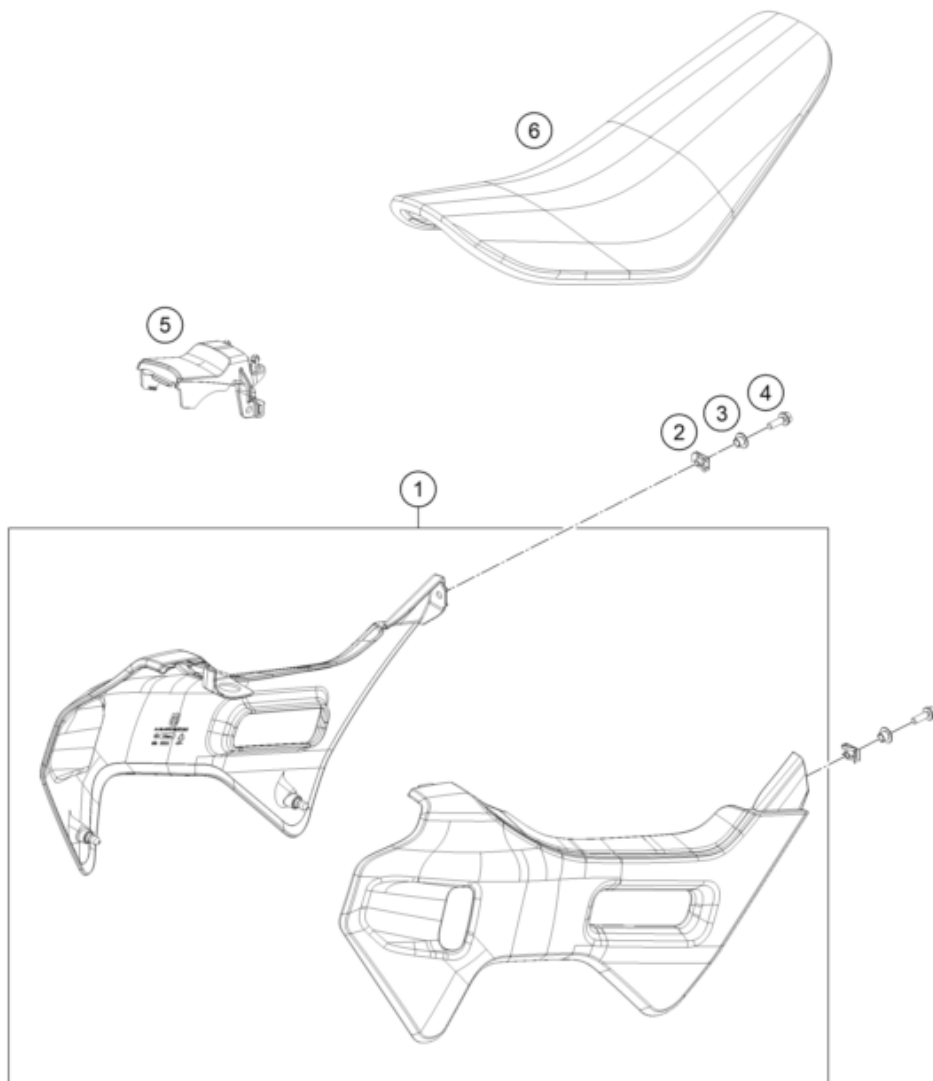
POS	PARTNUMBER		PIECE
1	A9010403000001	Swingarm	1
2	A901040300007	Axle mount	2
3	0025080306S	HH COLLAR SCREW M8X30 TX40	4
4	A90111047000	cable duct	1
5	69008021160	special screw M5x12	2
6	01665081056	Hex. bolt EN 1665-M8x105-10.9	1
7	0625060002	deep groove ball bearing SKF 6000-2RS1	2
8	0800000901301	Bushing 8.5x12x16	2
9	61112006080	WASHER 8,3X14X2 07	1
10	46030045000	flanged nut M8 WS10	1

24A9010490

68611

\* NEW PART

X ON DEMAND



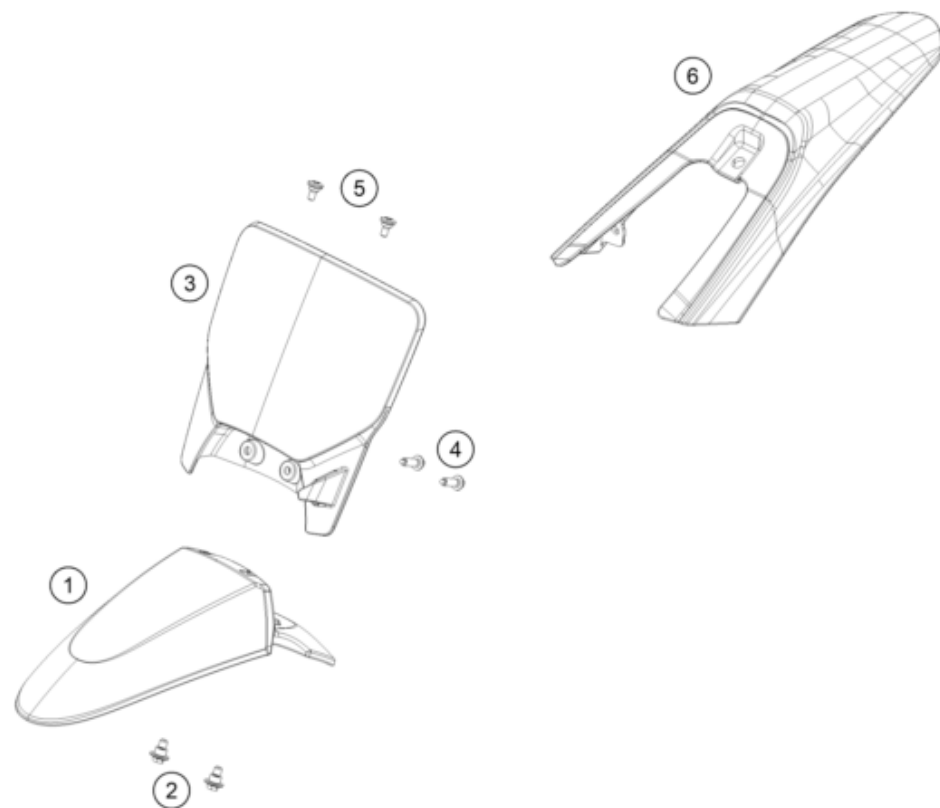
POS	PARTNUMBER		PIECE
1	A90108254000FBA	Spoiler set MC E 2 2024 with decal	1
2	54603048600	RANGE CHANGE METAL NUT M5 INOX	2
3	60305083082	SPACER BUSHING	2
4	0025050166	HH collar screw M5x16 TX30	2
5	A90103083000C1A	Frame cover with decal	1
6	A90107040000FB	Seat	1

24A9010710

68642

\* NEW PART

X ON DEMAND



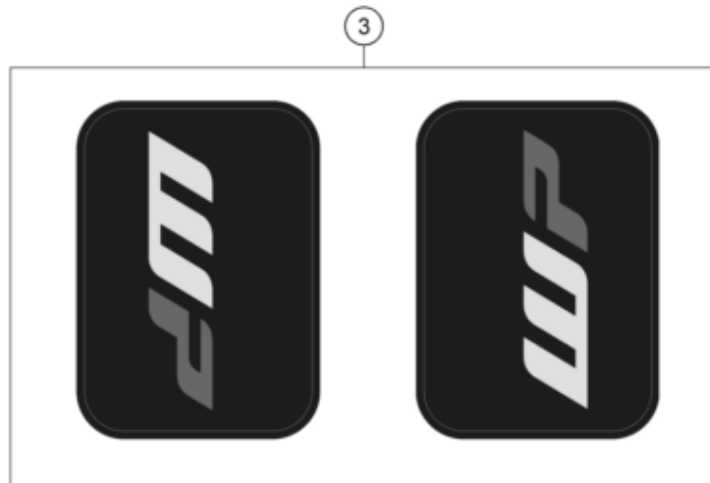
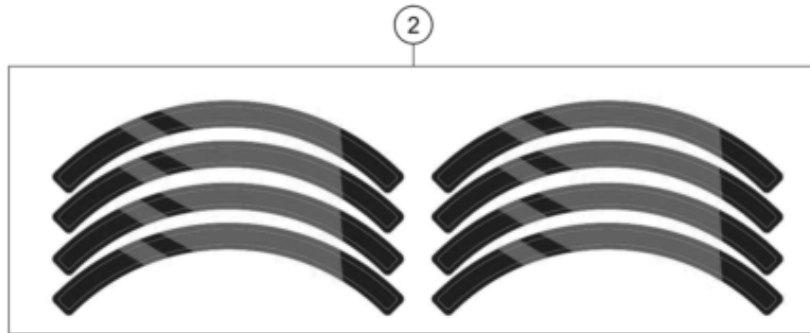
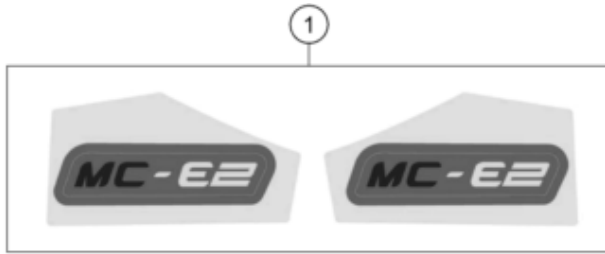
POS	PARTNUMBER		PIECE
1	A90108007000FBA	Number plate with decal	1
2	59001092050	SPECIAL SCREW M6X12,5 WS=8	2
3	A90108010000FB	Front fender	1
4	0017060206	SCREW F. PLASTIC K60X20AL SW6	2
5	69008021160	special screw M5x12	2
6	A90108013000FBA	Rear fender with decal	1

24A9010810

68641

\* NEW PART

X ON DEMAND



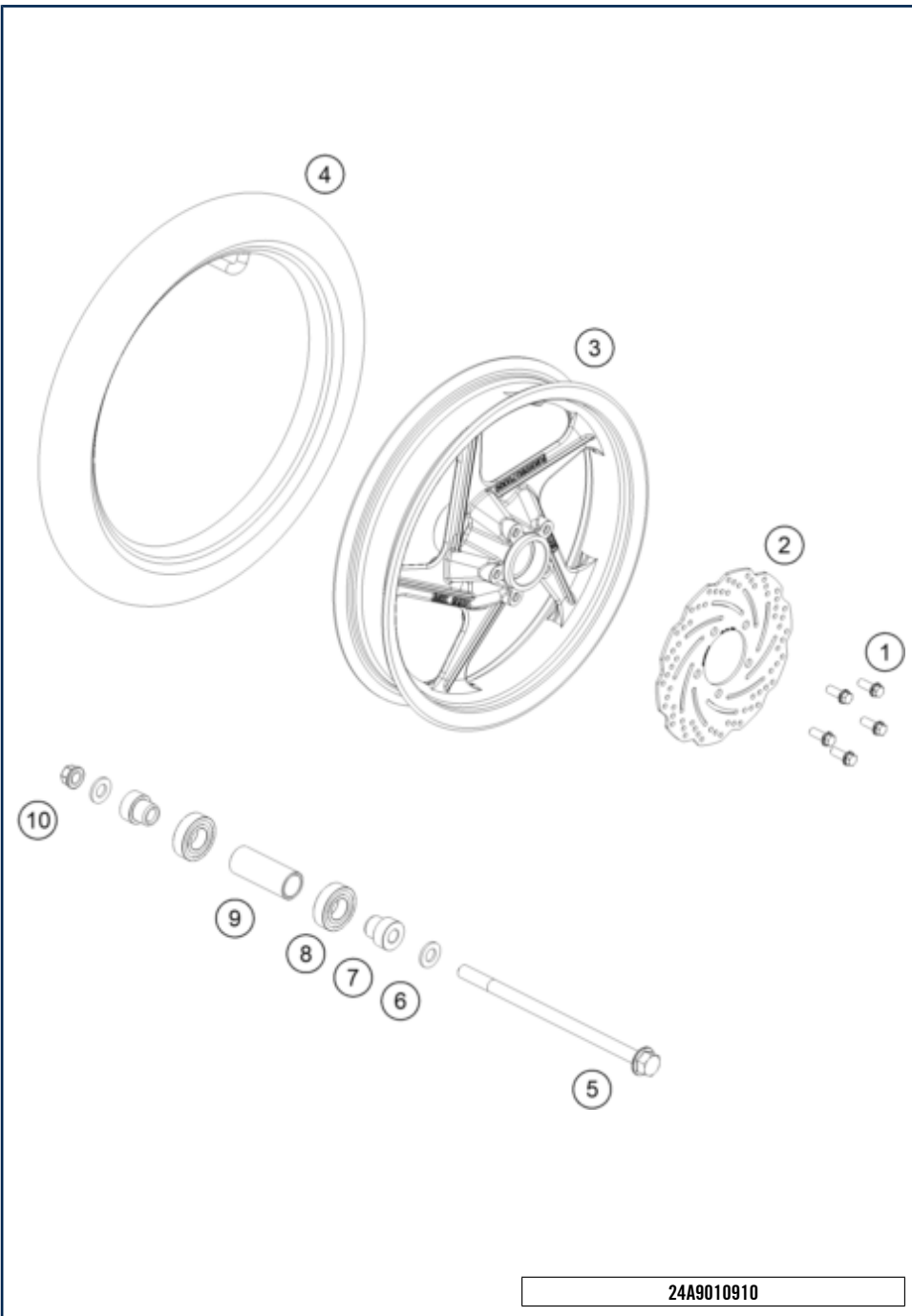
24A9010832

68645

\* NEW PART

X ON DEMAND

POS	PARTNUMBER		PIECE
1	A90108296000	Rear fender sticker set MC-E 2	1
2	A90109098000FB	Rim sticker	2
3	A90108087000	Fork sticker left + right	1

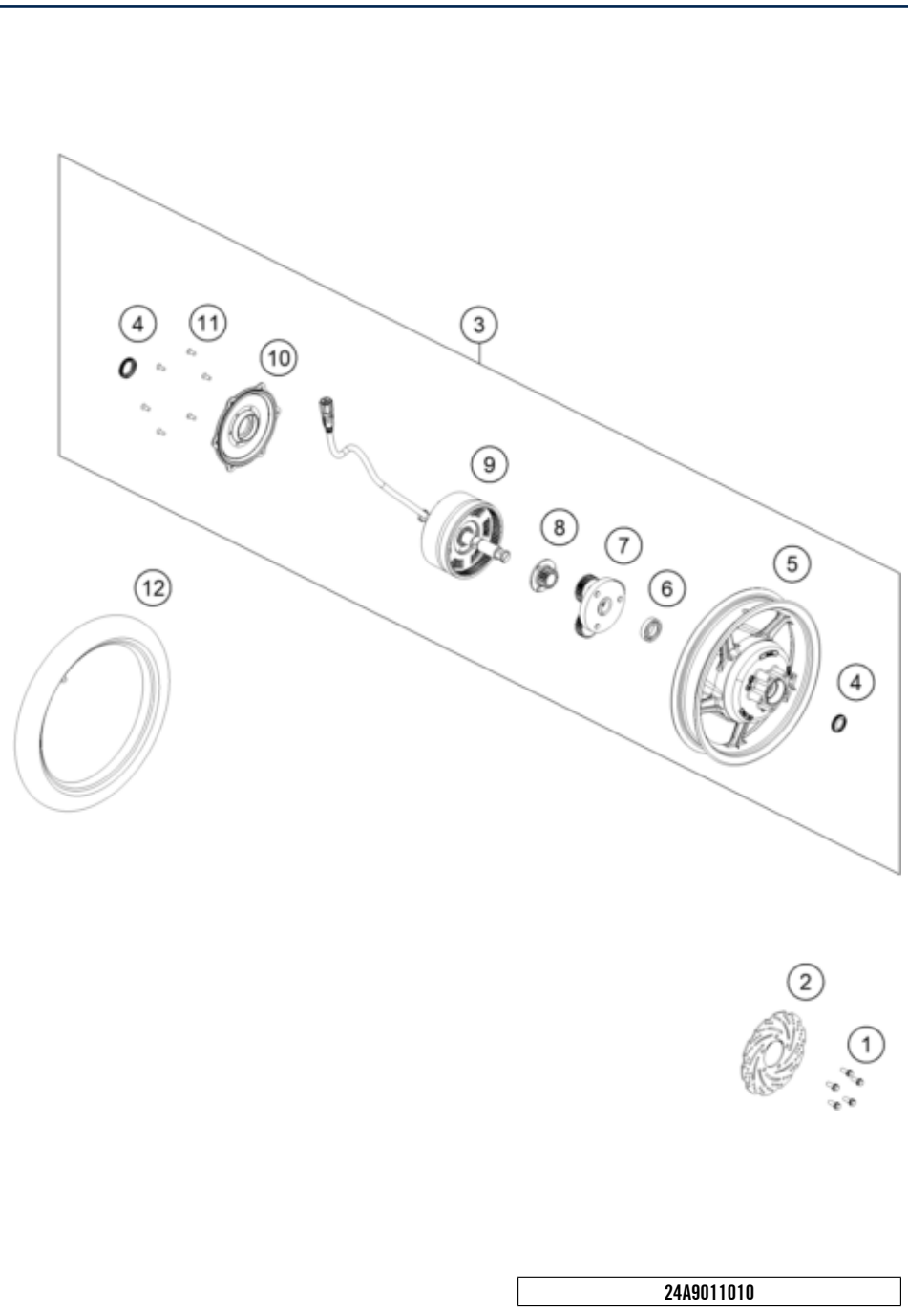


POS	PARTNUMBER		PIECE
1	59009062016	SPECIAL SCREW M6X16 WS=8 10.9	5
2	A90109060000	Front and rear brake disc	1
3	A90109070000	Front wheel 1.6 x 10"	1
4	A90109075000	Front tube 10"-2.5 angle valve	1
5	0016651019000	Hex screw EN 1665-M10x190-10.9	1
6	0125100003	washer DIN 125 A 10.5	2
7	0800001102301	Bushing 10.3x23x23	2
8	0625060037	GR.BALL BEAR. 6003-2RSH/C3HMTF	2
9	45309011000	Spacing tube front	1
10	54630044000	COLLAR NUT M10 WS=13	1

24A9010910

68615

\* NEW PART X ON DEMAND

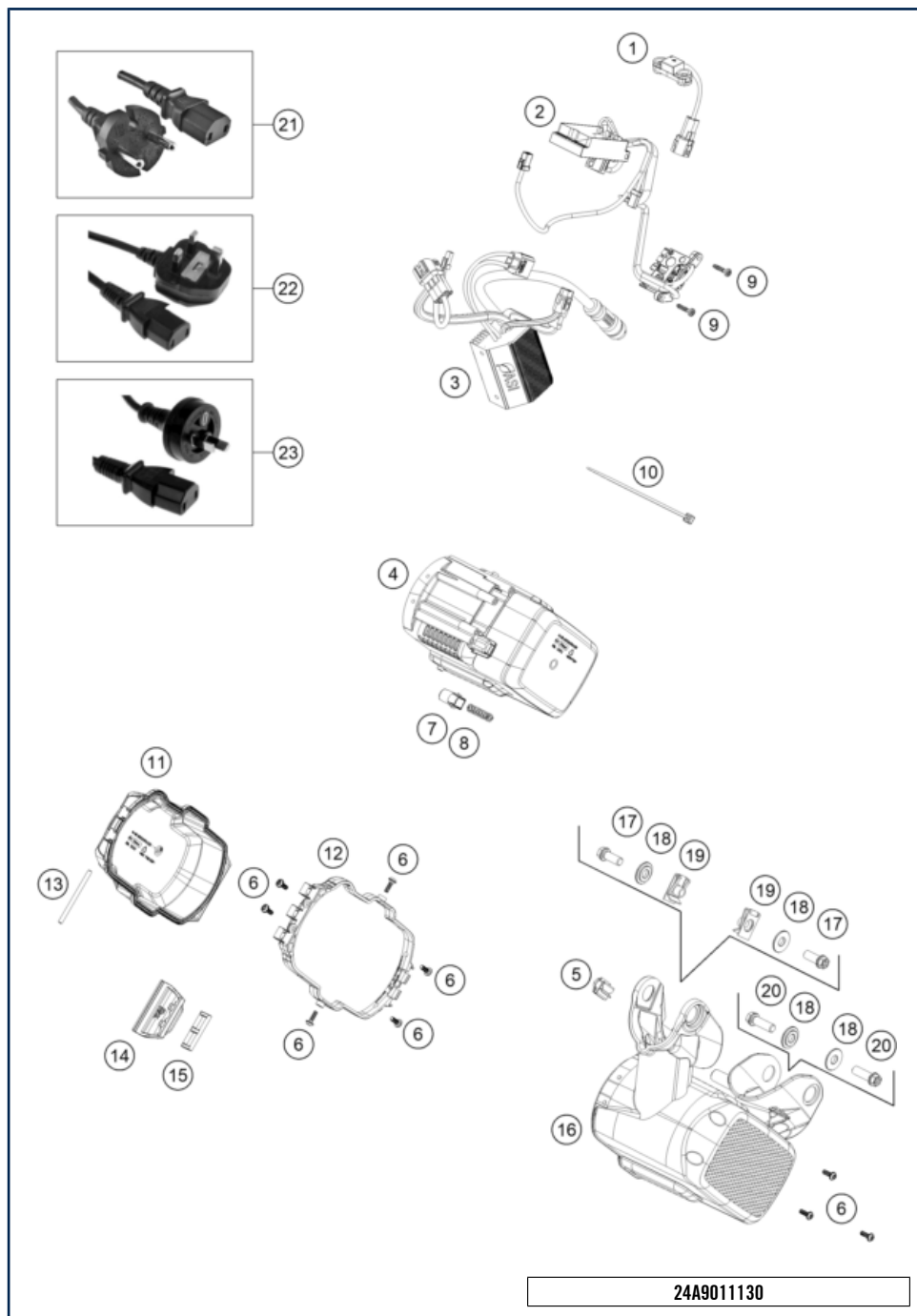


POS	PARTNUMBER		PIECE
1	59009062016	SPECIAL SCREW M6X16 WS=8 10.9	5
2	A90109060000	Front and rear brake disc	1
3	A90110010044	Rear wheel hub compl.	1
4	A90110010006	Dichtringe kit	1
5	A90110010001	Felge mit Hohlrad	1
6	0625069047	GR.BALL BEAR.6904 DDU2CG23S6NM	1
7	A90110010003	Planetenradtraeger	1
8	A90110010004	Sonnenrad	1
9	A90110010002	Stator kpl.	1
10	A90110010005	Motordeckel mit Lager	1
11	0019050121	COUNTERSUNK SCREW ISA25 M5X12	6
12	A90109075000	Front tube 10"-2.5 angle valve	1

24A9011010

68613

\* NEW PART X ON DEMAND



24A9011130

POS	PARTNUMBER		PIECE
1	A46041088000	Roll-over sensor	1
2	A90146020000	Battery management system	1
3	A90141031000	Engine control unit	1
4	A90111054010	Battery compartment carrier internal	1
5	61304042000	CABLE SUPPORT	1
6	0081040121	EJOT Delta PT K40x12	9
7	A90111054080	Battery spring cap HQVAB	1
8	A90111054070	Battery spring HQVAB	1
9	0081240181	EJOT PT screw K40x18 T20	2
10	44011076140	CABLE TIE 140/2,5MM BLACK	x
11	A90111054020C1A	Battery compartment cover with decal	1
12	A90111054044	Battery compartment cpl.	1
13	0000070405800	Basket shaft	1
14	60714082000	fastener	1
15	60714081000	clamping lever	1
16	A90111054000	Battery compartment	1
17	0025080206	HH collar screw M8x20	2
18	0800000900400	Bushing 8.5x25x3.2	4
19	54603048000	RANGE CHANGE METAL NUT M8	2
20	0025080256	HH collar screw M8x25	2
21	A90129074010	EU power cord	x
22	A90129074020	UK power cord	x
23	A90129074040	OZ power cord	x

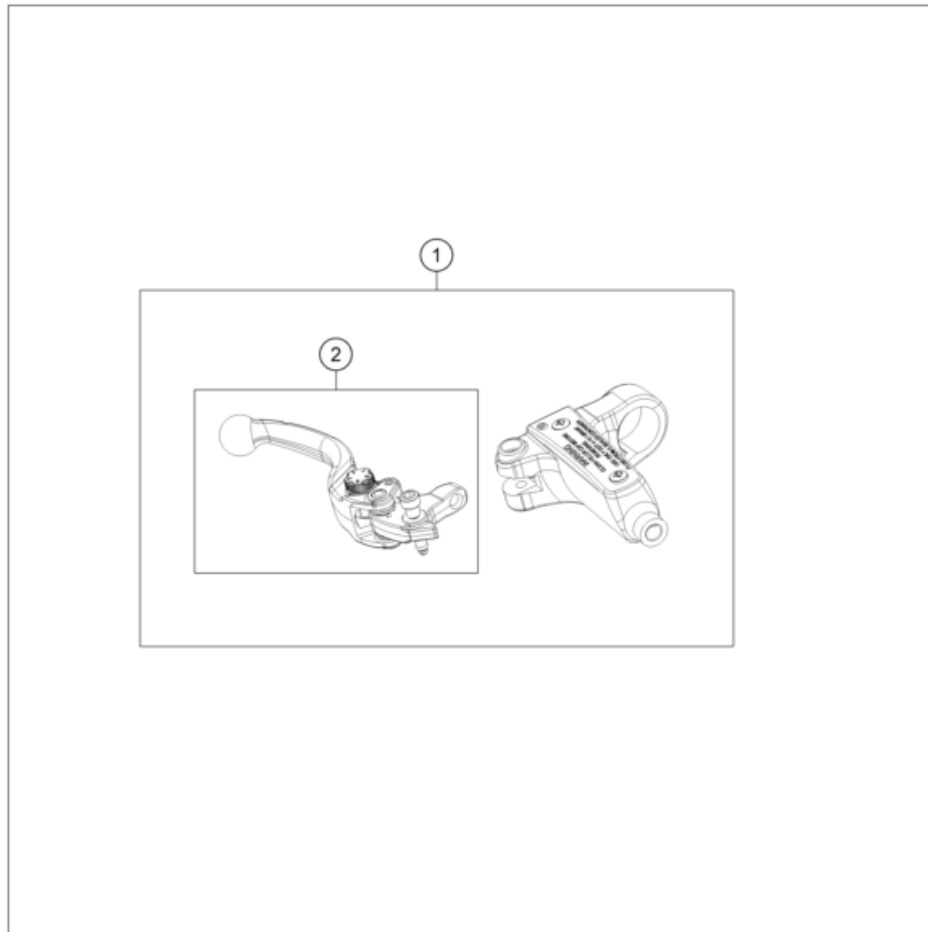
68643

\* NEW PART

X ON DEMAND



POS	PARTNUMBER		PIECE
1	A90113001044	Fork E2 cpl.	1
2	A90113002144	brake lever cpl. RH	1

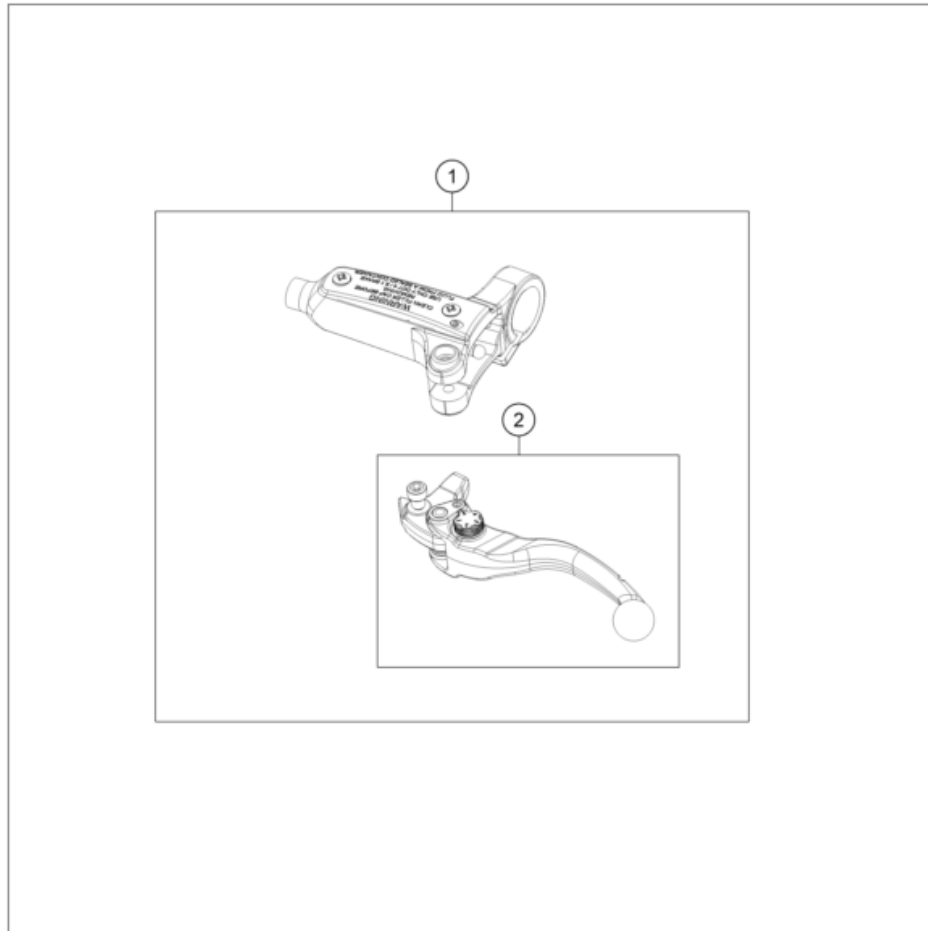


24A9011310

68582

\* NEW PART

X ON DEMAND



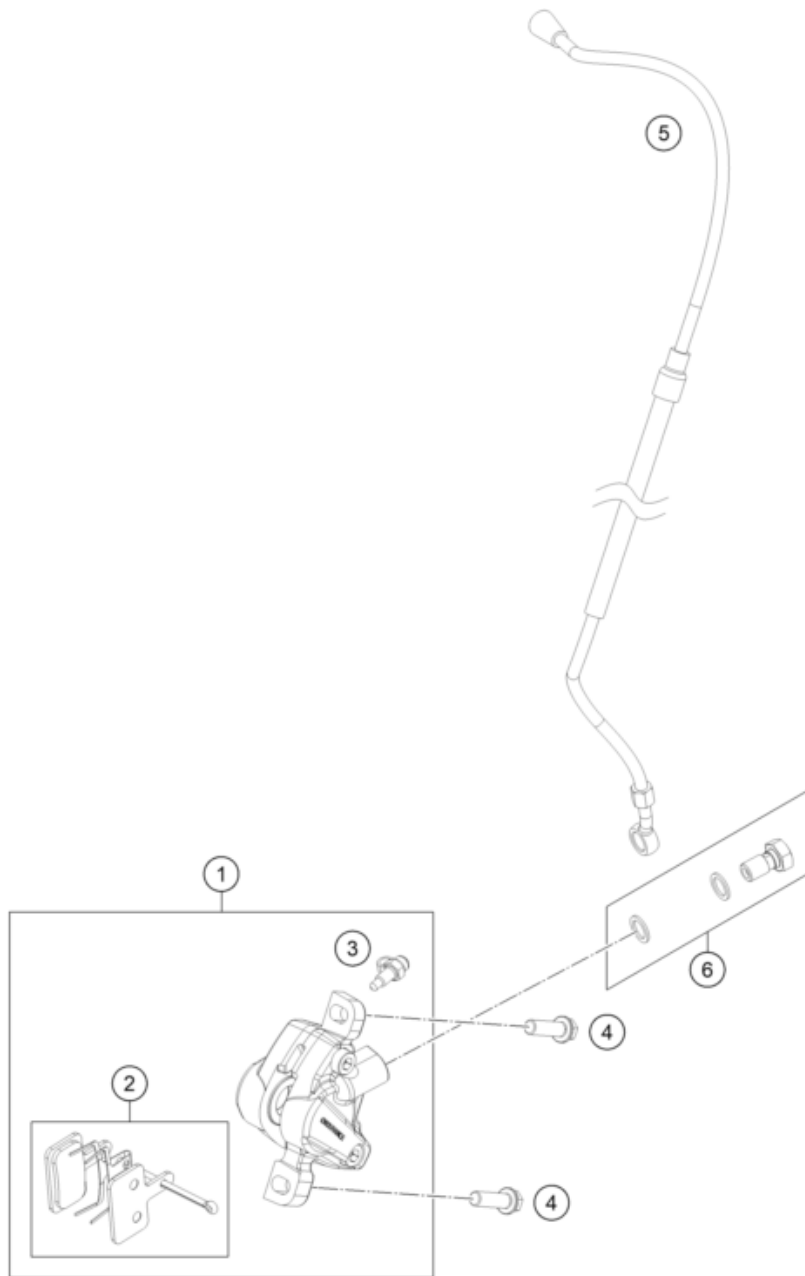
POS	PARTNUMBER		PIECE
1	A90113060044	brake cylinder cpl. LH	1
2	A90113002044	brake lever cpl. LH	1

24A9011330

68583

\* NEW PART

X ON DEMAND



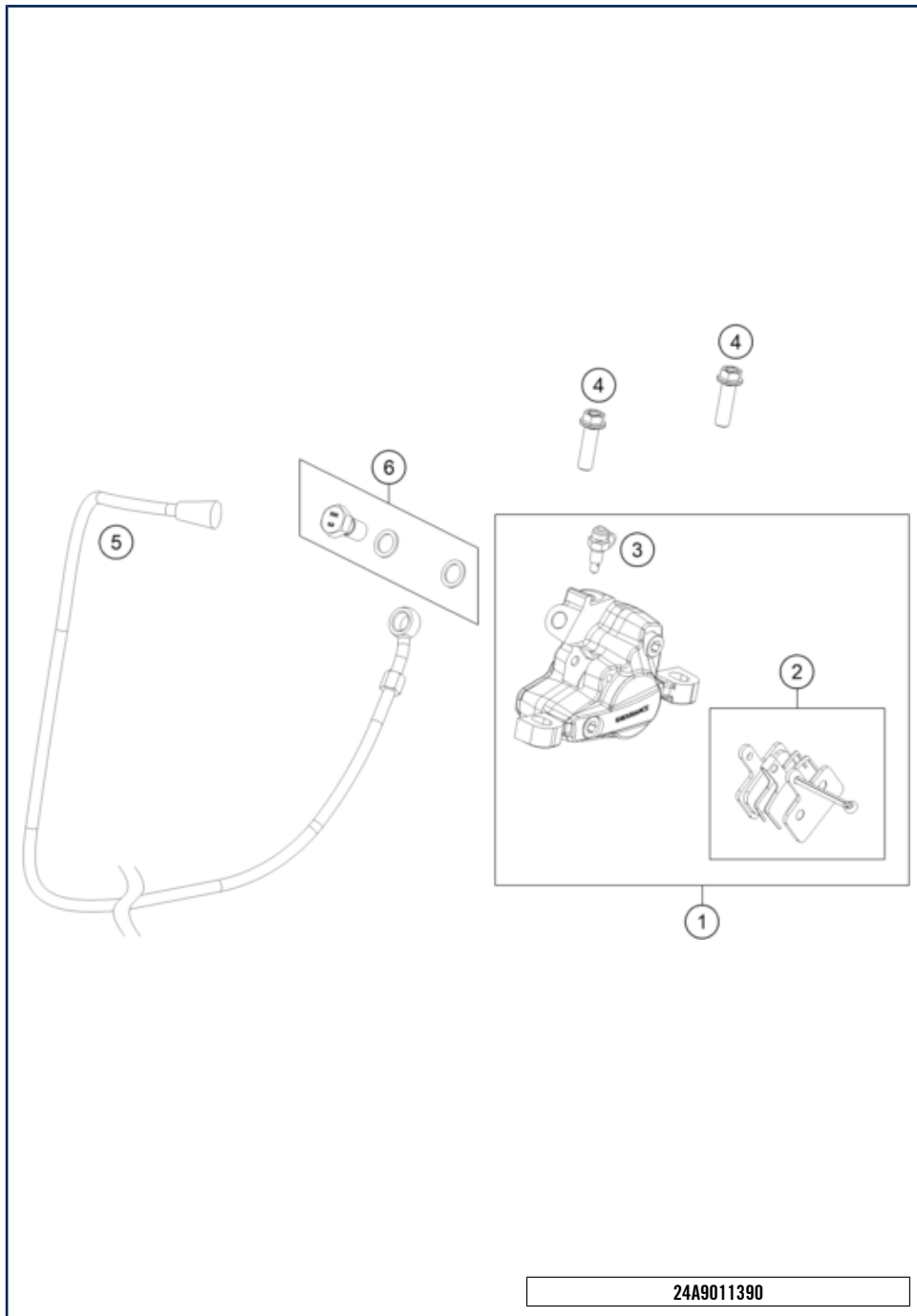
POS	PARTNUMBER		PIECE
1	A90113016044	brake caliper front	1
2	A90113030044	brake pads	1
3	A90113020000	bleeder screw with cap	1
4	0025060206S	HH collar screw M6x20 TX30	2
5	A90142003144	break hose	1
6	A90113025000	Banjo bolt	1

24A9011360

68618

\* NEW PART

X ON DEMAND



POS	PARTNUMBER		PIECE
1	A90113015044	brake caliper rear	1
2	A90113030044	brake pads	1
3	A90113020000	bleeder screw with cap	1
4	0025060206S	HH collar screw M6x20 TX30	2
5	A90142003044	brake hose	1
6	A90113025000	Banjo bolt	1

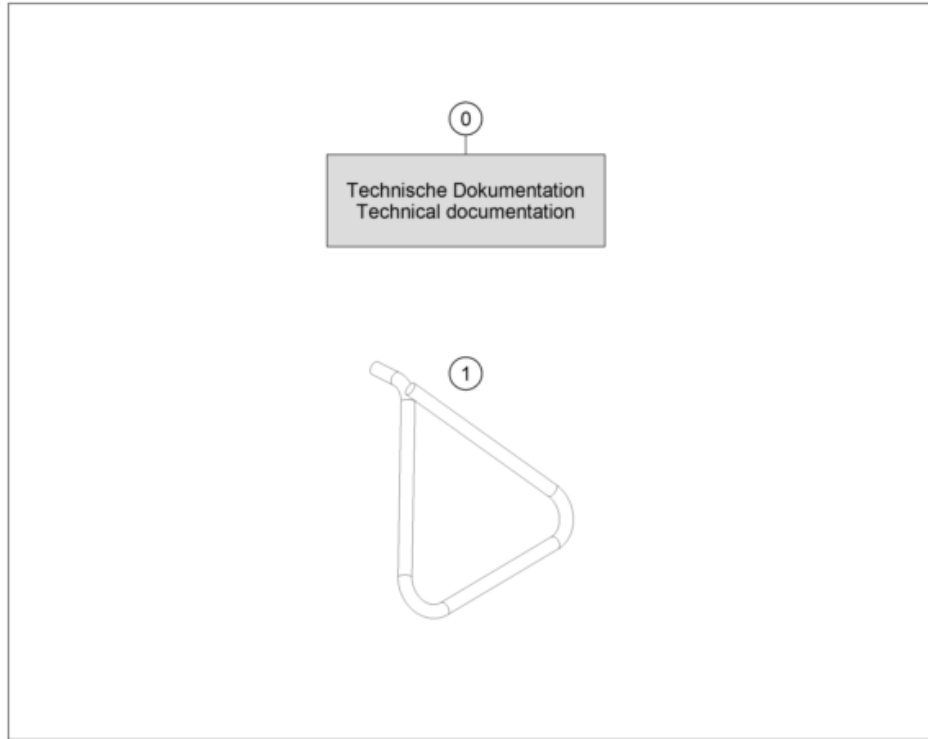
24A9011390

68612

\* NEW PART

X ON DEMAND

POS	PARTNUMBER		PIECE
0	3215180EN	Bed. Anleitung GG MC-E2	1
1	A90103023000	Side stand	1

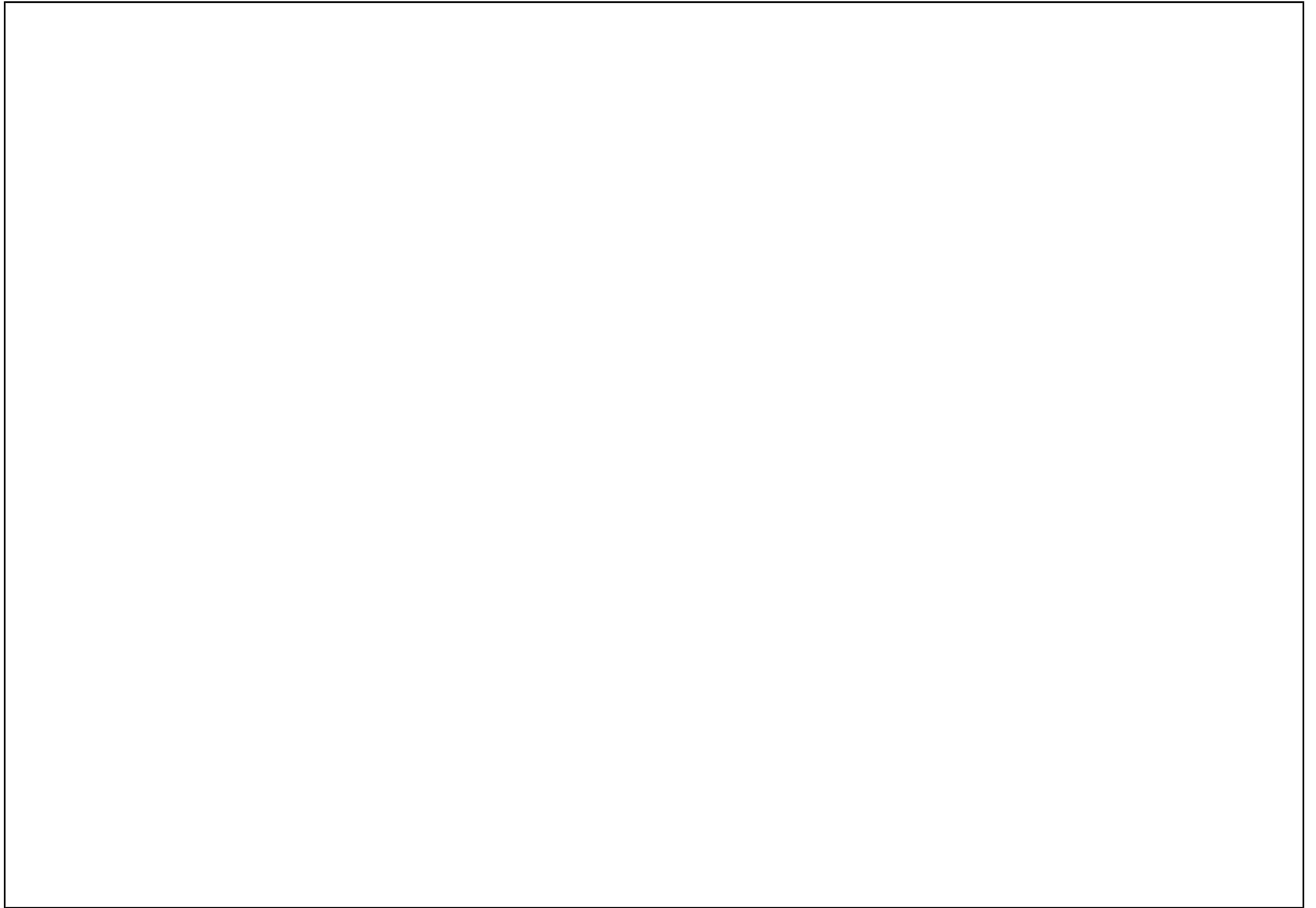


24A9012000

68646

\* NEW PART

X ON DEMAND







11/2023

ART.-NR.F0001X3



Stallhofnerstraße 3 / 5230 Mattighofen / Austria / [www.gasgas.com](http://www.gasgas.com)